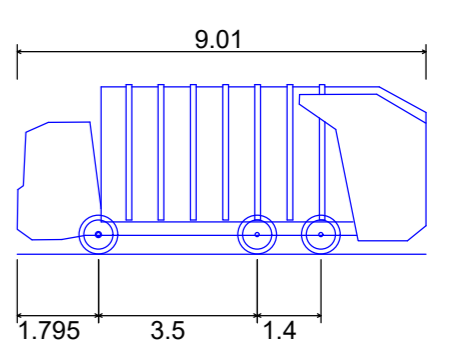


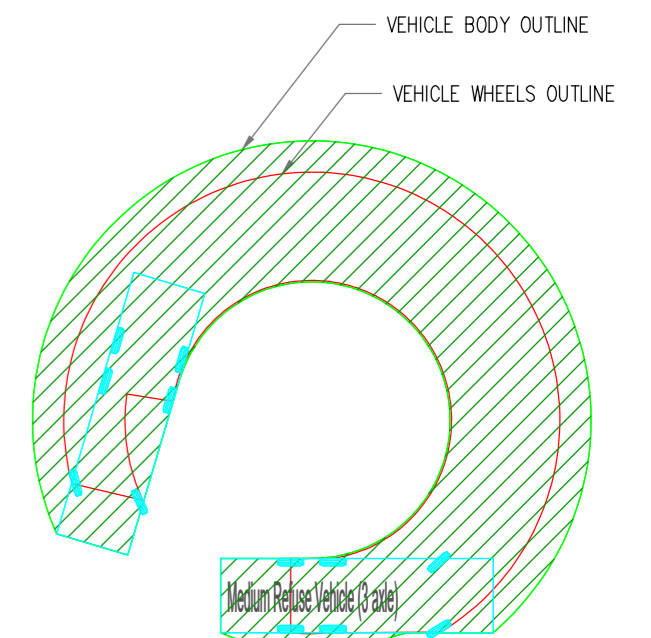


LEGEND:

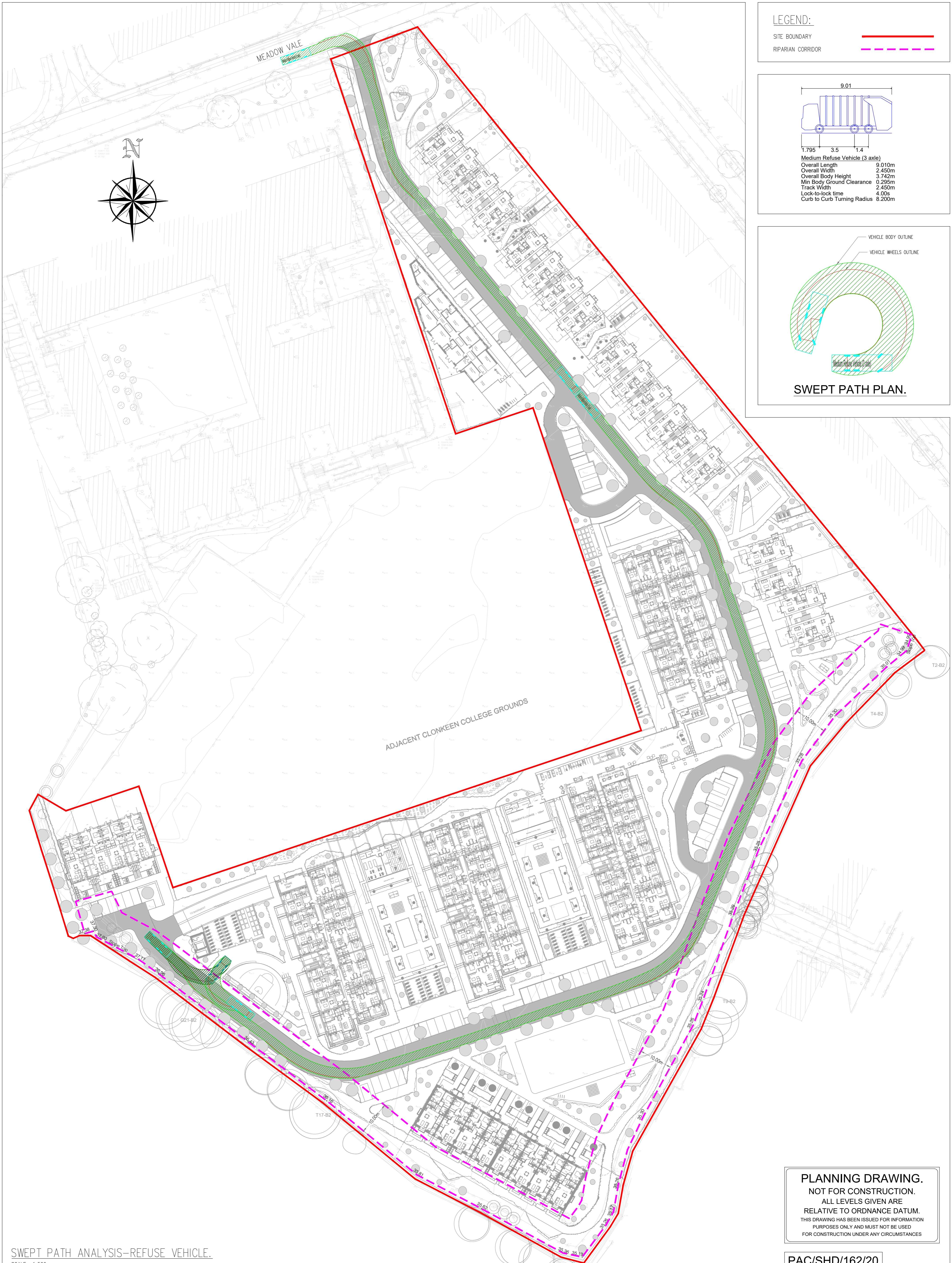
- SITE BOUNDARY
- RIPARIAN CORRIDOR



Medium Refuse Vehicle (3 axle)
 Overall Length 9.010m
 Overall Width 2.450m
 Overall Body Height 3.742m
 Min Body Ground Clearance 0.295m
 Track Width 2.450m
 Lock-to-lock time 4.00s
 Curb to Curb Turning Radius 8.200m



SWEPT PATH PLAN.



PLANNING DRAWING.
 NOT FOR CONSTRUCTION.
 ALL LEVELS GIVEN ARE
 RELATIVE TO ORDNANCE DATUM.
 THIS DRAWING HAS BEEN ISSUED FOR INFORMATION
 PURPOSES ONLY AND MUST NOT BE USED
 FOR CONSTRUCTION UNDER ANY CIRCUMSTANCES

PAC/SHD/162/20

W012

SWEPT PATH ANALYSIS-REFUSE VEHICLE.
 SCALE= 1:500

- NOTES**
1. For setting out refer to Architect's drawings.
 2. This drawing to be read in conjunction with all other Architectural and Engineering drawings and all other relevant drawings and Specifications.
 3. **DO NOT SCALE THIS DRAWING.** Use figured dimensions only.
 4. No part of this document may be reproduced or transmitted in any form or stored in any retrieval system of any nature without the written permission as copyright holder except as agreed for use on the project for which the document was originally issued.
 5. Ordnance Survey Ireland Licence Number EN 0074021

Rev. No.	Date	REVISION NOTE	Drn. By	Chkd. By
P1	13.10.2020	ARCHITECTS LAYOUT REVISED	JS	OS
P2	15.06.2021	ARCHITECTS LAYOUT REVISED	JS	OS

Architect		Scott Tallon Walker	
Project		Proposed Development at Clonkeen Road	
Title		Swept Path Analysis. Refuse Vehicle.	
Dwg. No.		W012-CSC-ZZ-XX-DR-C-0011	
Date	Drn. by	Chkd. by	Aprvd. by
02.06.2020	JS	NB	OS
Scale		1:500 @A1	
Revision		P2	

CS Consulting Group
 DUBLIN | LONDON | LIMERICK

Head Office
 19-22 Dame Street, Dublin 2.
 T: +353 (0)1 5480863 F: +353 (0)1 9011355
 e: info@csconsulting.ie
 w: www.csconsulting.ie

Quality Environment I.S. EN ISO 9001:2008
 Energy I.S. EN ISO 14001:2004
 NSAI Certified Health & Safety OHSAS 18001:2007